



Boone County, Kentucky
EFI Job Number 87830C
Owner: Boone-Florence Water Comm.
Engineer: Camp, Dresser & McKee
Capacity: 4 pumps
11.5 MGD
1500 HP
Reduced Voltage Solid
State Starters



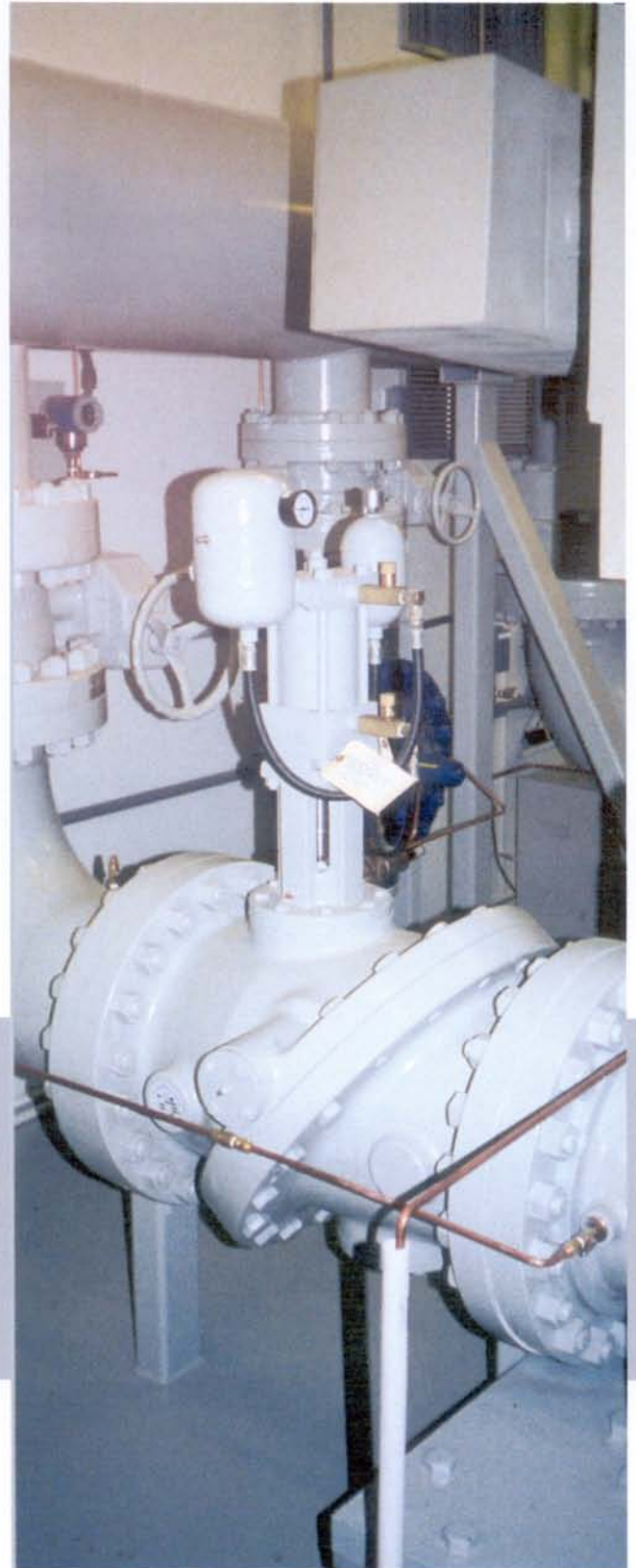


Engineered Fluid, Inc.
P.O. Box 723
Centralia, IL 62801
(618) 533-1351
FAX: (618) 533-1459
www.engineeredfluid.com



Boone County, Kentucky
EFI Job Number 87830C
Owner: Boone-Florence Water Comm.
Engineer: Camp, Dresser & McKee
Capacity: 4 pumps
11.5 MGD
1500 HP
Reduced Voltage Solid
State Starters





Engineered Fluid, Inc.
P.O. Box 723
Centralia, IL 62801
(618) 533-1351
FAX: (618) 533-1459
www.engineeredfluid.com